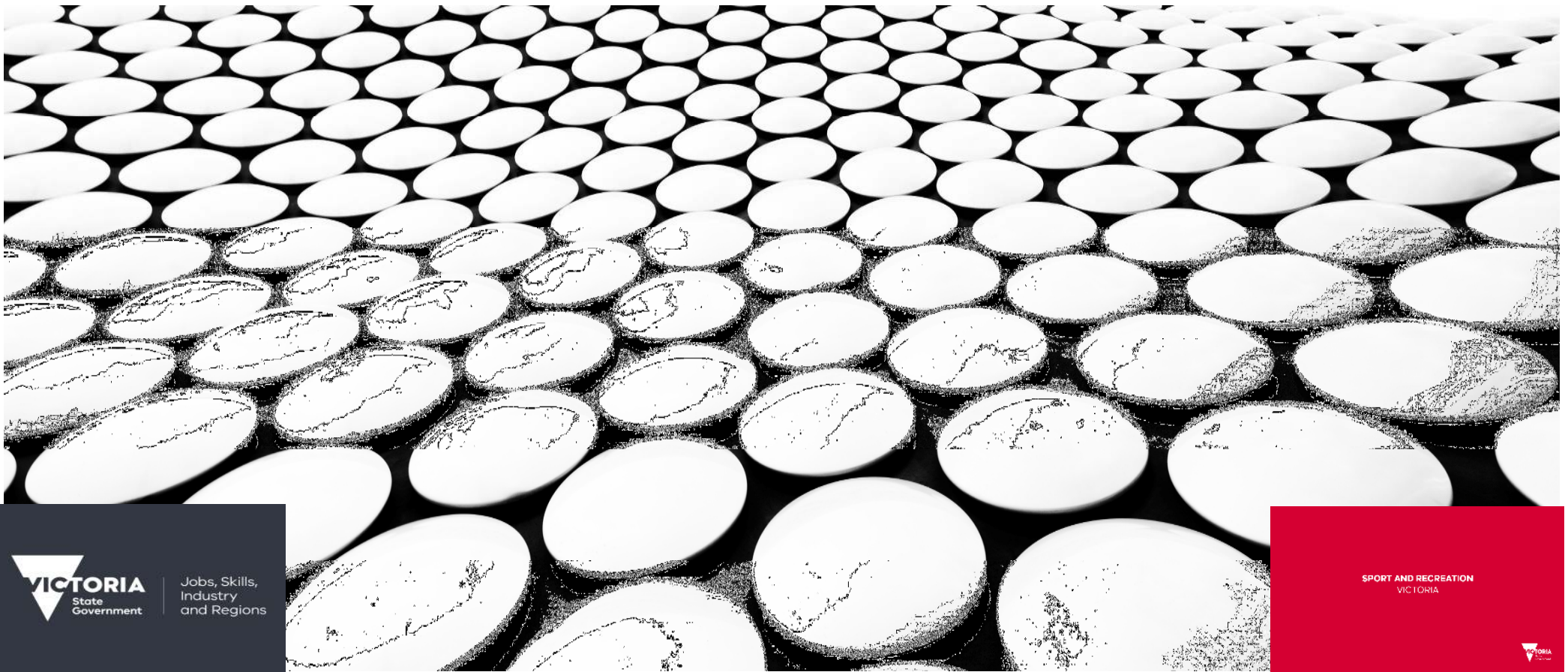


OAKLEIGH PISTOL CLUB BAFFLE PROJECT

BUILDING UPON OUR LEGACY



Jobs, Skills,
Industry
and Regions

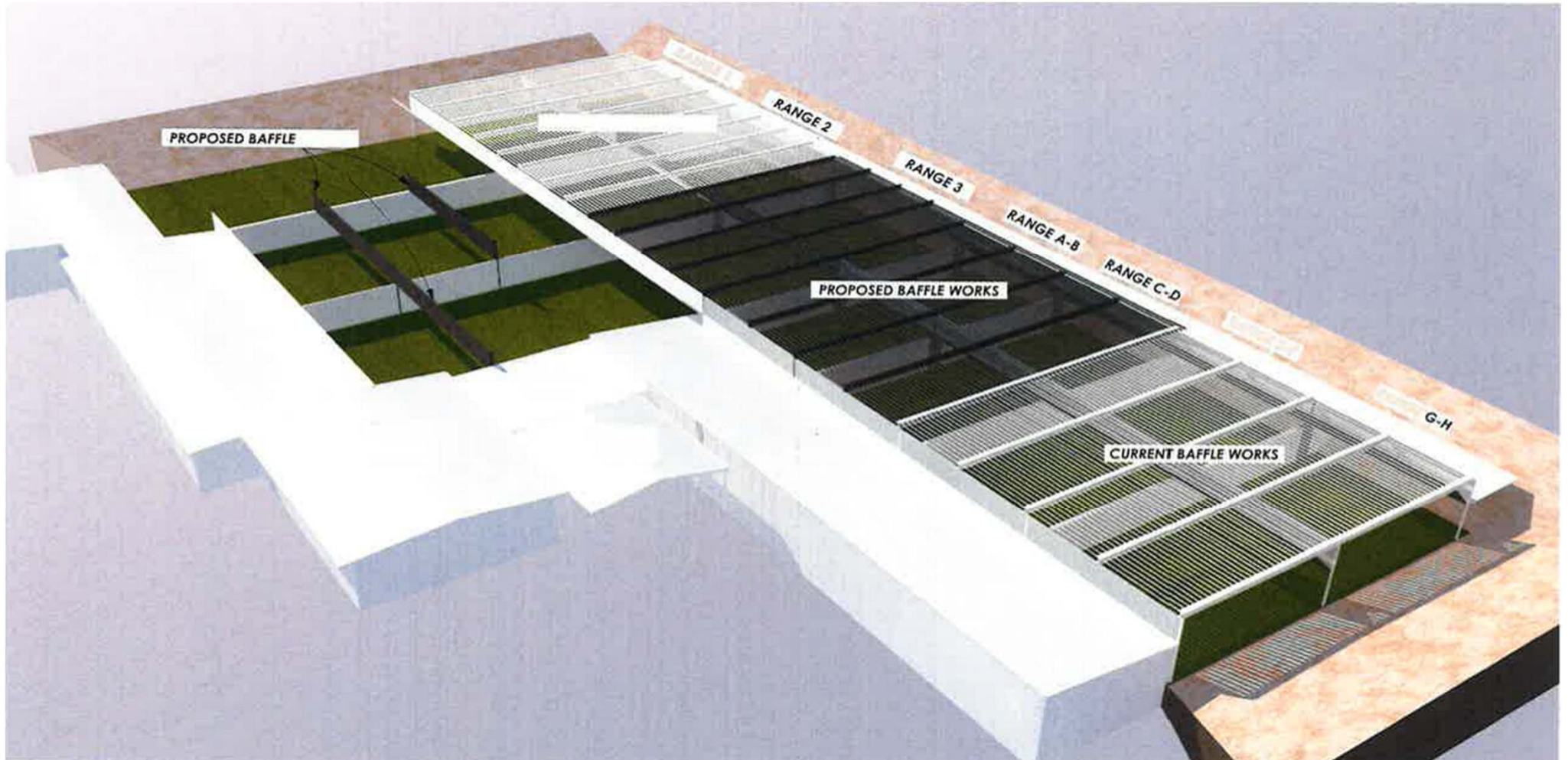
SPORT AND RECREATION
VICTORIA





**OUR PROBLEM... AGED
INFRASTRUCTURE**

OUR VISION... A COMPLETE REBUILD OF OUR COMPLEX



OUR PLAN...

(1) **Form a Working Group:** Derek Marchetti (lead), Neville Dawson, Gavin Horrigan, Alan Turnbull, Don Fraser

(2) **Apply for funding:** via a mix of Sport & Recreation Victoria funding, OPC reserves and in-kind funding:

GRANT 1: Shooting Sports Facility Funding (Round 4): \$447,842

- State Government: \$300,000
- OPC (cash): \$128,824
- OPC (in-kind): \$19,000

GRANT 2: Shooting Sports Facility Funding (Round 5): \$323,403

- State Government: \$258,617
- OPC (cash): \$57,106
- OPC (in-kind): \$7,680

(3) Deliver project

Aims:

- Ensure facility meets all safety requirements
- Leverage design to increase capacity
- Grow membership to ensure sustainability



**OUR JOURNEY... CHECKING OUT
OTHER RANGES**

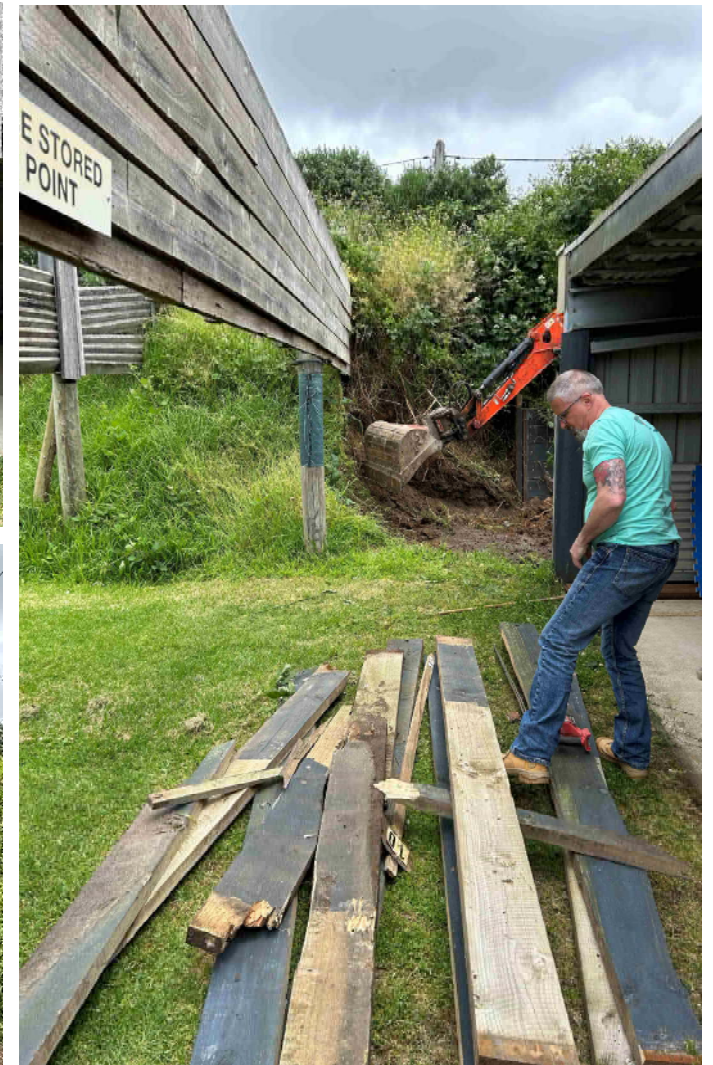
OUR JOURNEY... CREATING ACCESS TO RANGES



OUR JOURNEY... TANK RELOCATION



OUR JOURNEY... CREATING ACCESS TO RANGES



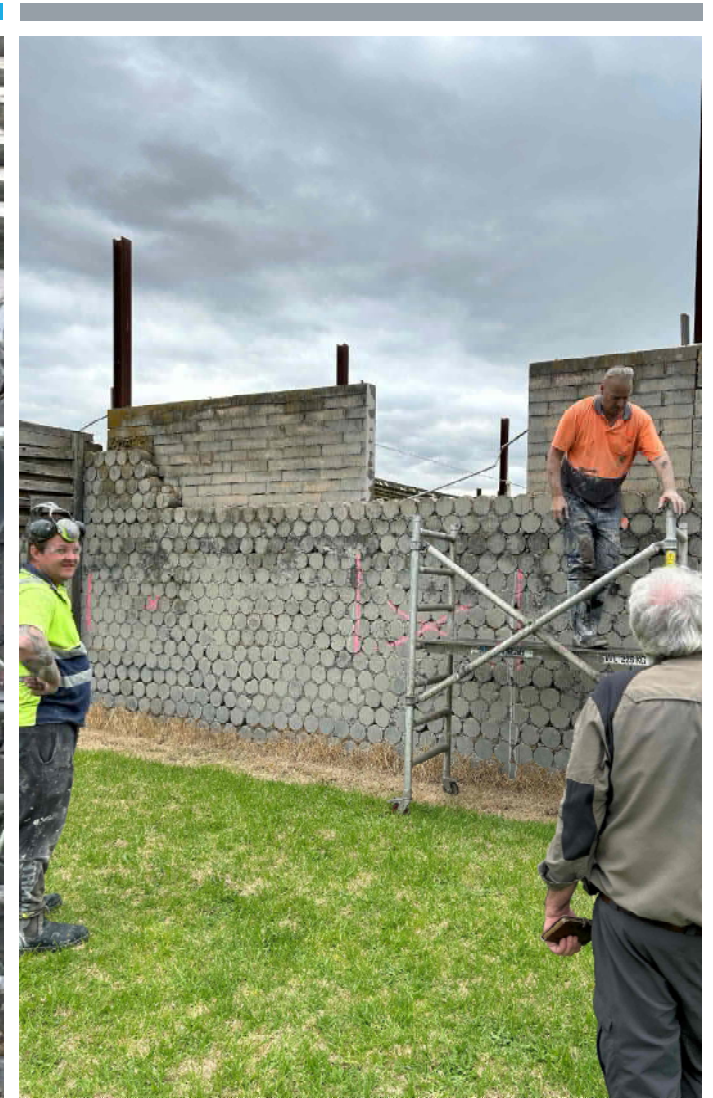
**OUR JOURNEY...
CREATING ACCESS
TO ALL RANGES**

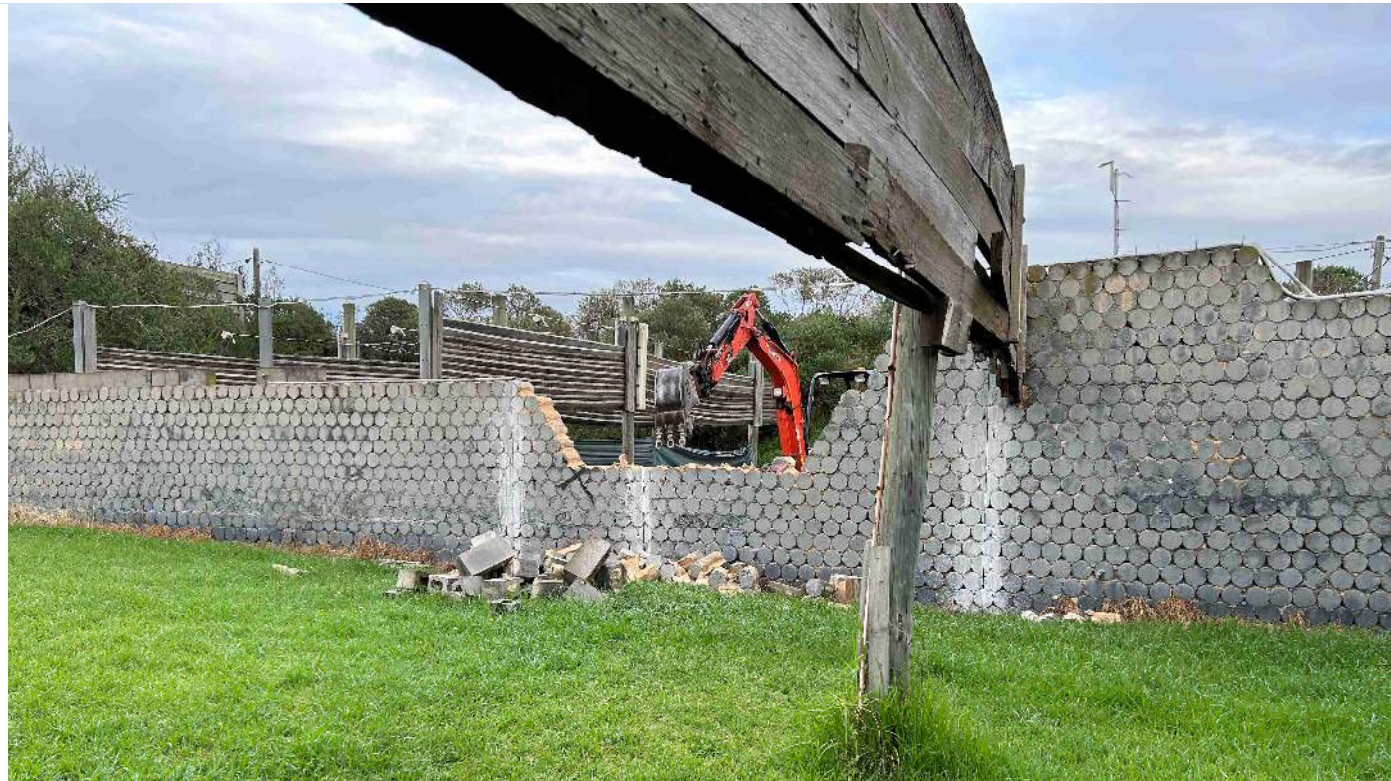




**OUR JOURNEY... TURNING TARGET
MODIFICATIONS**

**OUR JOURNEY...
CUTTING WALLS
BETWEEN
RANGES**





**OUR JOURNEY... DEMOLISHING
WALLS**

**OUR JOURNEY...
PREPARING FOR
SCREW PILES**





OUR JOURNEY... CONCRETING SCREW PILES

**OUR JOURNEY...
PUTTING IN
TEMPORARY FENCING**





**OUR JOURNEY... TEMPORARY
FENCES IN PLACE**



**OUR PLAN... ALEXANDRA
STAINLESS FABRICATING
STEEL AND SENDING IT TO
BE GALVANIZED**



NEXT STEPS...

- 15 September – steel fabrication commenced
- 15 November – wood dressing commenced
- 20 November – steel starts going to galvanisers

- 11 December – ground works commence including demolishing of existing baffles, walls on A/B and C/D and installation of final screw piles
- 15 January – steel frame construction commences
- 5 February – baffle installation commences

- Lighting
- Wall replacement
- **Removal of timber baffles from ranges (30 tonnes)**

Stage 1

- Closed - 17 April 2023
- Reopen - 9 August 2023

Stage 2

- Closed - 11 December 2023
- Reopen - 2024

PROJECT STATISTICS...

Steel:

- 43 tonnes supported by 31 screw piles up to 3.5m deep
- 4m high baffle system, 90m x 25m = 2,250m²

Timber:

- 1,100 5m lengths weighing 50kg each (55 tonnes)
- Delivered by 5 semi-trailers
- 6km end to end

Demolition:

- 75 tonnes of concrete walls and footings removed

Cost:

- \$800k (making this OPC's largest capital project)